

Stabilized Compact Red CrystaLaser®

High reliability High stability Single longitudinal mode Circular beam

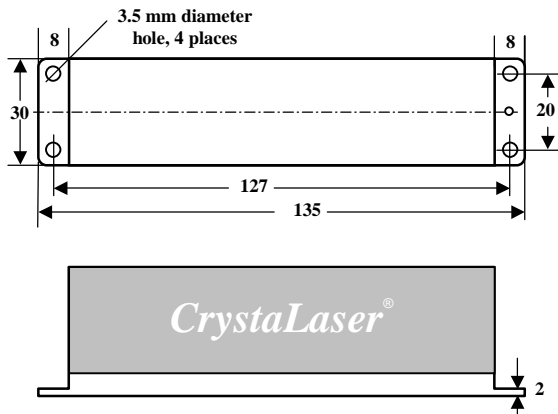
SPECIFICATIONS

Wavelength	Option ± 1 nm available	Low noise version, Model No.				SLM version, Model No.			
633 ± 1 nm		DL633-100	100 mW	DL633-050	50 mW	DL633-050-S	50 mW	DL633-025-S	25 mW
635 ± 2 nm and 638 ± 2 nm		DL638-150	150 mW	DL638-050	50 mW	DL638-100-S	100 mW	DL638-050-S	50 mW
		DL638-100	100 mW	DL638-035	35 mW	DL638-070-S	70 mW	DL638-035-S	35 mW
		DL638-070	70 mW	DL638-025	25 mW			DL638-025-S	25 mW
642 ± 4 nm	647 ± 1 nm option available	DL640-150	150 mW	DL640-050	50 mW	DL640-100-S	100 mW	DL640-050-S	50 mW
		DL640-100	100 mW	DL640-025	25 mW	DL640-070-S	70 mW	DL640-025-S	25 mW
660 ± 5 nm	655 ± 1 nm option available	DL660-250	250 mW	DL660-035	50 mW	DL660-050-S	50 mW	DL660-025-S	25 mW
		DL660-100	100 mW	DL660-025	25 mW				
690 ± 5 nm, 705 ± 5 nm, 730 ± 5 nm		DL690-050	50 mW	DL690-030	30 mW	DL690-050-S	50 mW	DL690-025-S	25 mW
785 ± 5 nm	780 nm available	DL785-400	400 mW	DL785-100	100 mW	DL785-300-S	300 mW	DL785-120-S	120 mW
		DL785-200	200 mW			DL785-150-S	150 mW	DL785-100-S	100 mW
Longitudinal mode		Multiple				Single			
Spectrum linewidth		1 nm, typical				< 0.00001 nm or <10 MHz			
Coherence length		< 0.3 mm				> 10 meters or >100 meters option			
Output noise (rms, 10Hz-50MHz)		< 0.5 %				< 0.5 %			
Output stability over 24 hours (rms)		< 1 %; Option: ultra-stable version < 0.25%				2 % Option: ultra-stable version < 0.5%			
Modulation options		TTL 200Hz, 50kHz, 20MHz, 100 MHz, 200MHz; Analog control, Analog modulation				TTL on/off option			
Transverse mode		Circular beam, close to TEM ₀₀ , M ² = 1.1 - 1.3							
Beam diameter (1/e ²)		1.1 mm		Option: 0.7X - 3X laser beam expanders are available to change beam size and divergence. e.g. 0.8 mm beam with 1.3 mrad divergence; or 2.5 mm beam with 0.4 mrad divergence					
Beam divergence		1 mrad							
Beam pointing stability		< 0.005 mrad/°C							
Polarization ratio		100:1; Vertical linear polarization							
Operation temperature		5 °C to 40 °C, internal TEC temperature-stabilized, no additional heat sink required							
Warm-up time		< 30 seconds							
Operation voltage		90-250 VAC or 12VDC OEM version 11-16VDC							
Dimensions and weight of laser head		3 x 3.6 x 13.5 cm ³ (1.2 x 1.4 x 5.3 in ³), 0.3 kg (0.6 lb)							
Dimensions and weight of power supply		Standard AC: 5 x 14 x 15 cm ³ (2 x 5.5 x 6 in ³), 0.5 kg (1 lb); CL-2005 power display AC: 5 x 16 x 15 cm ³ 12 VDC OEM version: Integrated inside the laser head.							

Applications: Holographics, Flow cytometry, Fluorescence, Confocal microscopy, Raman Spectroscopy

Fiber coupling option: Single mode and multi-mode fiber delivery.

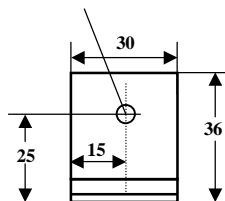
CL-2005 power supply option: Power adjustable and power digital display.



All dimensions in mm

Front View

Laser beam is output from this aperture



Made in the USA