

Compact infrared 808-980 nm single mode *CrystaLaser*[®]

High reliability High stability Single longitudinal mode Circular beam

SPECIFICATIONS

Wavelength	Option ± 1 nm available	Low noise version, Model No.				SLM version, Model No.			
808 ± 5 nm		DL808-400	400 mW	DL808-100	100 mW	DL808-200-S	200 mW	DL808-100-S	100 mW
830 ± 5 nm		DL830-500	500 mW	DL830-100	100 mW	DL830-200-S	200 mW	DL830-100-S	100 mW
852 ± 5 nm		DL852-500	500 mW	DL852-100	100 mW	DL852-300-S	300 mW	DL852-100-S	100 mW
910 ± 5 nm		DL910-300	300 mW	DL910-100	100 mW	DL910-100-S	100 mW	DL910-050-S	50 mW
940 ± 5 nm		DL940-250	250 mW	DL940-100	100 mW	DL940-100-S	100 mW	DL940-050-S	50 mW
980 ± 5 nm		DL980-500	500 mW	DL980-200	200 mW	DL980-200-S	200 mW	DL980-100-S	100 mW
		DL980-350	350 mW	DL980-100	100 mW				
Longitudinal mode		Multiple				Single			
Spectrum linewidth		1 nm, typical				< 0.001 nm			
Coherence length		< 0.3 mm				> 10 meters			
Output noise (rms, 10Hz-50MHz)		< 0.5 %				< 0.5 %			
Output stability over 24 hours (rms)		< 1 %; Option: ultra-stable version < 0.25%				2 % Option: ultra-stable version < 0.5%			
Modulation options		TTL 200Hz, 50kHz, 20MHz, 100 MHz, 200MHz; Analog control, Analog modulation				TTL on/off option			
Transverse mode		Circular beam, single mode, TEM ₀₀ , M ² = 1.1 - 1.3							
Beam diameter (1/e ²)		1.1 mm		Option: 0.7X - 3X laser beam expanders are available to change beam size and divergence. e.g. 0.8 mm beam with 1.5 mrad divergence; or 2.5 mm beam with 0.5 mrad divergence					
Beam divergence		1.2 mrad							
Beam pointing stability		< 0.005 mrad/°C							
Polarization ratio		100:1; Vertical linear polarization or 45 degree off vertical If optical Isolator added							
Operation temperature		5 °C to 40 °C, internal TEC temperature-stabilized							
Warm-up time		< 30 seconds							
Operation voltage		90-250 VAC or 12VDC OEM version 11-16VDC							
Dimensions and weight of laser head		Type 1 for >350 mW or S veraion laser, Type 4, 3 x 3.6 x 13.5 cm ³ (1.2 x 1.4 x 5.3 in ³), 0.3 kg (0.6 lb)							
Dimensions and weight of power supply		Standard AC: 5 x 14 x 15 cm ³ (2 x 5.5 x 6 in ³), 0.5 kg (1 lb):				CL-2005 AC: 5 x 16 x 15 cm ³			
		12 VDC OEM version: Integrated inside the laser head.							

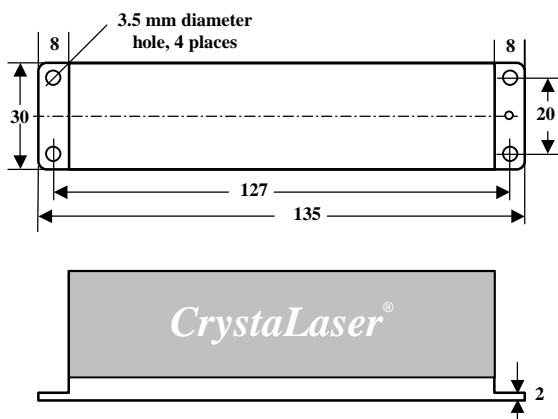
Up to 10W available for multi-mode laser for the laser wavelength of 808 nm-980 nm

Applications: Flow cytometry, Fluorescence, Confocal microscopy, Raman Spectroscopy

Fiber coupling option: Single mode and multi-mode fiber delivery. **Optical Isolator Option:** Protect the laser

CL-2005 power supply option: Power adjustable and power digital display.

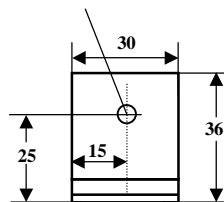
Dimensions Type 1, please check the website. Type 4 shown below



All dimensions in mm

Front View

Laser beam is output from this aperture



Made in the USA